



RÜSCH LARYNGOSCOPES

Comprehensive solutions for your intubation needs



TELEFLEX – COMPREHENSIVE SOLUTIONS FOR YOUR INTUBATION NEEDS

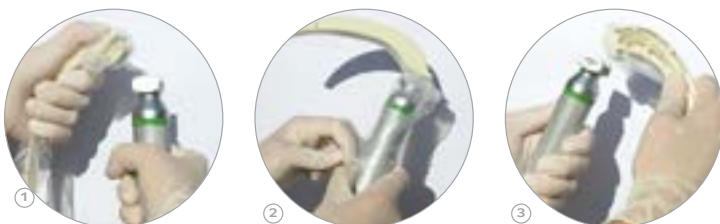
Trusted brands make Teleflex a reliable and strong partner. Built on a solid tradition of innovation, Teleflex is a global leader in superior medical supplies designed to help providers minimise risk and maximise outcomes for their patients. Our understanding of the importance to our customers of a full range of devices has led to the development of a unique line of products, all of which complement one another.

Today, the variety of laryngoscope systems we supply ensures the best choice for any patient condition, patient anatomy, situation and environment. We, at Teleflex, want to provide the most suitable system to meet every requirement. Thanks to RÜSCH, we offer standards of quality and competence that are renowned throughout the world. Our complete range of products to meet intubation needs consists of top quality RÜSCH laryngoscopes in various designs and sizes that meet the highest standards of patient safety. We provide a choice of reusable and single-use products.

You can find further details and the technical specifications of our products within this brochure.

TELEFLEX – HIGH QUALITY MEDICAL SUPPLIES FROM A SINGLE SOURCE

USE OF SAFEVIEW BLADES WITH PROTECTION SHEATH



- ① Connect the blade to the handle while it is still in its protection sheath. Maintain sheath at connection side and tear off its pre-cut tip.
- ② Protect the handle: roll up & slide the Safe-view sheath over it.
- ③ Once intubation has been completed, roll down & slide the sheath back onto the blade and dispose of it.

BLADES

SAFEVIEW® BLADE WITH PROTECTION SHEATH





SIMPLICITY, EFFICACY, SECURITY – ALL IN ONE

The blade is of high rigidity, making it the perfect choice for even the most challenging interventions. Its optimised profile and gliding properties facilitate the insertion of the instrument, and its high luminosity guarantees optimal visibility. Each Safeview blade has already been inserted into an individual protection sheath to reduce the risk of cross-contamination for patient and staff by protecting the handle from making contact with secretions or blood during and after intubation. Safeview blades are easy and rapid to use, even in cases of emergency. When seconds count, you can count on Safeview.



SAFEVIEW BLADE WITH PROTECTION SHEATH

RUSCH





	REF.	ORDER SIZE	OVERALL LENGTH*	DISTAL WIDTH*	DESCRIPTION	QTY
	670504	1	94.0	9.0	<ul style="list-style-type: none"> • Macintosh blade • plastic • cold light • single-use • clean packed 	10
		2	106.0	10.5		10
		3	142.0	15.0		20
		4	157.0	15.0		20
	670505	0	77.0	10.0	<ul style="list-style-type: none"> • Miller blade • plastic • cold light • single-use • clean packed 	10
		1	106.0	10.0		
		2	158.0	14.5		
	670150	0	81.0	11.0	<ul style="list-style-type: none"> • Macintosh blade • metallic • cold light • single-use • clean packed 	10
		1	90.0	11.0		
		2	100.0	12.5		
		3	130.0	14.5		
		4	155.0	14.5		
		5	175.0	15.0		
	670185	00	65.0	10.0	<ul style="list-style-type: none"> • Miller blade • metallic • cold light • single-use • clean packed 	10
		0	79.0	10.0		
		1	105.0	12.0		
		2	157.0	12.0		
		3	180.0	12.0		
		4	208.0	14.0		

* Tolerance +/- 2mm

X-LITE BLADES

X-LITE BLADES – SINGLE USE

RUSCH

	REF.	ORDER SIZE	OVERALL LENGTH*	DISTAL WIDTH*	DESCRIPTION	QTY
	670166	2	115.0	14.0	<ul style="list-style-type: none"> • Macintosh blade • sterile • single-use 	10
		3	135.0	16.0		
		4	155.0	16.0		
	670167	2	115.0	14.0	<ul style="list-style-type: none"> • Macintosh blade • single-use 	20
		3	135.0	16.0		
		4	155.0	16.0		
	670166	0	80.0	10.5	<ul style="list-style-type: none"> • Miller blade • sterile • single-use 	10
		1	104.0	10.5		
	670167	0	80.0	10.5	<ul style="list-style-type: none"> • Miller blade • single-use 	20
		1	104.0	10.5		

X-LITE BLADES – REUSABLE

RUSCH

	REF.	ORDER SIZE	OVERALL LENGTH*	DISTAL WIDTH*	DESCRIPTION	QTY
	670000	0	78.0	9.0	<ul style="list-style-type: none"> • Macintosh blade 	1
		1	92.5	11.5		
		2	112.5	11.5		
		3	132.5	14.0		
		4	152.5	15.0		
		5	172.5	15.0		
	670060	0	78.5	10.5	<ul style="list-style-type: none"> • Miller blade 	1
		1	102.5	11.0		
		2	153.5	14.0		
		3	192.5	13.0		
		4	210.5	16.5		
	670050	0	77.5	9.5	<ul style="list-style-type: none"> • Foregger blade 	1
		1	92.5	11.0		
		2	112.5	14.0		
		3	132.5	16.0		
		4	157.5	17.0		
	670001	small	64.5	11.0	<ul style="list-style-type: none"> • blade for paediatrics 	1
		medium	79.5	11.5		
		big	95.0	16.0		
	670015	1	92.5	11.0	<ul style="list-style-type: none"> • Take-a-part • Macintosh blade • with light holder 	1
		2	111.5	11.5		
		3	132.5	16.0		
		4	152.5	16.0		
	670016	1	–	–	<ul style="list-style-type: none"> • Take-a-part • replacement light holder 	1
		2	–	–		
		3	–	–		
		4	–	–		

* Tolerance +/- 2mm

LED HANDLES

METALLIC HANDLE

LED light

- intensity of LED lamp > 50,000 lux
- LED operating time over 10,000 hours

Power source

- thin: two 1.5 V AA size alkaline batteries
- standard: two 1.5 V C size alkaline batteries
- short: one 3.0 V lithium battery



METALLIC FIBROPTIC LARYNGOSCOPE HANDLE – REUSABLE

RUSCH

REF.	ORDER SIZE	DESCRIPTION	QTY
671067-000010	thin	LED handle*	1
671067-000020	standard	LED handle*	1
671067-000030	short	LED handle*	1
671067-000100	–	Bulb LED	1

* no batteries included

PLASTIC HANDLE WITH NON-RECHARGEABLE BATTERIES

LED light

- high-performance LED with an illuminance of 19,000 lux at the tip of the blade
- quick to use, maintenance-free
- LED operating time: over 1,000 hours

Lithium-ion battery, not rechargeable

- 4 hours operating time at maximum operation
- no memory effect
- self-discharge level < 1 % per year



PLASTIC FIBROPTIC LARYNGOSCOPE HANDLE – REUSABLE

RUSCH

REF.	ORDER SIZE	DESCRIPTION	QTY
670065-000010	adult	handle**	1
670065-000100	–	replacement cartridge including LED bulb & battery	1

** batteries included

X-LITE LED RECHARGABLE HANDLE

Inductive battery charger with automatic shutdown function:

- charges up to two units at a time
- no maintenance requirement for contacts, due to inductive charging; no corrosion or contact problems
- handles can be charged also while still in packaging
- automatic shutdown to avoid overcharging



- ① lithium-ion storage battery cartridge
- ② handle casing
- ③ inductive charging station

METALLIC FIBROPTIC LARYNGOSCOPE HANDLE – REUSABLE			<i>RUSCH</i>
REF.	ORDER SIZE	DESCRIPTION	QTY
670006	adult	handle casing	1
670057	adult	lithium-ion storage battery cartridge for handle casing (with lid & LED light)	1
ACCESSORIES			
670019	–	inductive battery charger 220V/240V (Li-Ion)	1

X-LITE XENON LIGHT REUSABLE HANDLE



X-Lite is a fiberoptic laryngoscope with a xenon lamp in the handle and fibreglass light holder in the blade.

X-Lite focuses the light ray directly in front of the blade tip thus combining excellent light quality with the highest light yield.

- X-Lite generates a light yield which is up to 200% higher than halogen light due to a greater percentage of whiteness, making it similar to daylight halogen lights
- The light source integrated in the handle is well-protected and maintenance-free. The excellent illumination provides a higher level of safety during intubation
- The handle is manufactured in accordance with ISO 7376-3/EN1819 (green ring)

X-LITE SYSTEM: THE MAXIMUM

Excellent xenon light quality: components optimally suited to one another provide daylight conditions and an especially realistic reproduction of colour tones. The excellent illumination provides a higher level of safety during intubation.



① handle casing (adult/paediatric)

② battery insert

X-LITE COMPACT HANDLES

RÜSCH

REF.	ORDER SIZE	DESCRIPTION	QTY
670006	paediatric (thin)/adult	handle casing	1
670049	paediatric (thin)/adult	battery container for handle casing (with battery, lid and xenon light)	1

Ordering information:

To have a complete handle, you need to order one handle casing and one battery insert in the same size.

X-LITE ACCESSORIES

RÜSCH

REF.	ORDER SIZE	DESCRIPTION	QTY
670011	–	xenon light for battery operation	6
670007	paediatric (thin)/adult	lid for handle casing	1
670008	paediatric (thin)/adult	battery insert (without lamp and without battery)	1
670053	–	actuator (black PVC) for paediatric/adult handle	5

Teleflex is a leading global provider of specialty medical devices used for diagnostic and therapeutic procedures in critical care, urology and surgery. Our mission is to provide solutions that enable healthcare providers to improve outcomes and enhance patient and provider safety. We specialise in devices for general and regional anaesthesia, cardiac care, respiratory care, urology, vascular access and surgery and we serve healthcare providers in more than 150 countries. Teleflex also provides specialty products for medical device manufacturers.

Our well known brands include ARROW®, DEKNATEL®, GIBECK®, HUDSON RCI®, KMEDIC®, LMA™, PILLING®, PLEUR-EVAC®, RÜSCH®, SHERIDAN®, TAUT®, TFX OEM®, VASONOVA™, VIDACARE® and WECK®, all of which are trademarks or registered trademarks of Teleflex Incorporated.

Teleflex global operations: Australia, Austria, Belgium, Canada, China, Czech Republic, France, Germany, Greece, India, Ireland, Italy, Japan, Malaysia, Mexico, Netherlands, New Zealand, Portugal, Singapore, Slovak Republic, South Africa, Spain, Switzerland, United Kingdom, Uruguay and USA.

YOUR INTERNATIONAL CONTACTS:

TELEFLEX HEADQUARTERS INTERNATIONAL, IRELAND

Teleflex Medical Europe Ltd., IDA Business and Technology Park,
Dublin Road, Athlone, Co Westmeath
Phone +353 (0)9 06 46 08 00 · Fax +353 (0)14 37 07 73
orders.intl@teleflex.com

AUSTRALIA/NEW ZEALAND +61 (0)3 9081 0600

AUSTRIA +43 (0)1 402 47 72

BELGIUM +32 (0)2 333 24 60

CHINA (SHANGHAI) +86 (0)21 6163 0965

CHINA (BEIJING) +86 (0)10 6418 5699

CZECH REPUBLIC +420 (0)495 759 111

FRANCE +33 (0)5 62 18 79 40

GERMANY +49 (0)7151 406 0

GREECE +30 210 67 77 717

INDIA +91 (0)44-2836 5040

ITALY +39 0362 58 911

JAPAN +81 (0)3 3379 1511

NETHERLANDS +31 (0)88 00 215 00

PORTUGAL +351 22 541 90 85

SINGAPORE +65 6439 3000

SLOVAK REPUBLIC +421 (0)3377 254 28

SOUTH AFRICA +27 (0)11 807 4887

SPAIN +34 918 300 451

SWITZERLAND +41 (0)31 818 40 90

UNITED KINGDOM +44 (0)1494 53 27 61

For detailed information see www.teleflex.com

The products in this catalogue may not be available in all countries. Please contact your local representative. All data current at time of printing (12/2014). Subject to technical changes without further notice.

93 97 50 - 00 00 11 · REV B · MC / WM · 12 14 xx